

SHENZHEN MTC CO.,LTD



002429

.....	3
.....	4
.....	5
.....	8
.....	9
.....	17
.....	21
.....	99

SHENZHEN MTC CO., LTD

MTC

	3069	A 32
	0755- 33345613	0755- 33345613
	0755- 33345607	0755- 33345607
	l s@szmtc. com. cn	l s@szmtc. com. cn

A

3069

A 31 32

518026

<http://www.szmtc.com.cn>

l s@szmtc. com. cn

<http://www.cninfo.com.cn>

002429

2005 4 4

2009 12 11

440301102850794

44030677272966X

77272966-X

5022

A 7

	2,794,323,044.07	1,310,874,150.17	113.16%
	2,463,946,754.14	684,621,958.16	259.90%
	472,542,500.00	416,542,500.00	13.44%
/	5.21	1.64	217.68%
	1.6		
	1,245,841,405.99	1,142,624,173.40	9.03%
	176,346,176.84	94,746,368.02	86.12%
	181,047,631.72	96,998,911.33	86.65%
	150,322,523.07	88,213,965.61	70.41%
	146,326,286.42	75,848,591.75	92.92%
/	0.36	0.21	71.43%
/	0.36	0.21	71.43%
%	19.78%	16.94%	2.84%
	-103,589,135.11	188,057,984.20	-155.08%
/	-0.22	1.13	-119.47%

	- 7, 368. 00
	351, 363. 00
	4, 357, 459. 88
	- 705, 218. 23
	3, 996, 236. 65

10 [2010] 648 2010 6
A 5600 1
30 [2010] 189
2010 6 10

			+ -					
	416, 542, 500	100. 00%	11, 200, 000			11, 200, 000	427, 742, 500	90. 52%
1								
2			4, 621, 031			4, 621, 031	4, 621, 031	0. 98%
3	400, 092, 500	96. 05%	6, 578, 969			6, 578, 969	406, 671, 469	86. 06%
	374, 077, 500	89. 81%	6, 578, 969			6, 578, 969	380, 656, 469	80. 55%
	26, 015, 000	6. 25%					26, 015, 000	5. 51%

4									

	211, 620	
	149, 989	
	139, 400	
	120, 000	
	114, 400	
	113, 500	
	111, 000	
	91. 6459%	

10

	303, 327, 500	2013 6 10	1
	33, 515, 000	2011 6 10	2
	16, 217, 500	2011 6 10	
	14, 612, 500	2011 6 10	
	10, 405, 000	2011 6 10	
	7, 000, 000	2011 6 10	
	4, 325, 000	2011 6 10	
	5, 250, 000	2011 6 10	3
	5, 250, 000	2011 6 10	
	5, 250, 000	2011 6 10	

1

2

3

		5,250,000	5,250,000
		5,250,000	5,250,000
		5,250,000	5,250,000
		700,000	700,000
		700,000	700,000
		700,000	700,000
	AV	350,000	350,000
		210,000	210,000

			45	2010	05	19	2013	05	18
			36	2010	05	19	2013	05	18
			42	2010	05	19	2013	05	18

			38	2010	05	19	2013	05	18	
			46	2010	05	19	2013	05	18	
			42	2010	05	19	2013	05	18	
			42	2010	05	19	2013	05	18	
			43	2010	05	19	2013	05	18	
			44	2010	05	19	2013	05	18	
			39	2010	05	19	2013	05	18	
			39	2010	05	19	2013	05	18	
			30	2010	05	19	2013	05	18	
			38	2010	05	19	2013	05	18	
			37	2010	05	19	2013	05	18	
	AV		30	2010	05	19	2013	05	18	
			37	2010	05	19	2013	05	18	

2010

1

2010 6 10

ODM

2

" "

3

HDMI LED IPTV

1

			%	%	%	%
	124,584.14	103,890.95	16.61%	9.03%	3.44%	4.51%
	67,789.45	58,834.13	13.21%	17.96%	12.68%	4.07%
	49,509.54	39,081.45	21.06%	4.41%	-2.45%	5.55%

2010

2010	1-9	30% 60%	
2009	1-9		171, 881, 445. 46
		2010	

		4					
		4	3	1	0	0	
		4	3	1	0	0	
		4	3	1	1	0	
		4	3	1	0	0	
		4	3	1	0	0	
		4	3	1	0	0	
		4	3	1	0	0	
		4	3	1	0	0	
		4	3	1	0	0	
		4	3	1	0	0	
		4	3	1	0	0	

1 2010 1 22

1 2009

2 2009

3 2009

4 2009

5 2009

6

7

8

A

9

10 2009

2 2010 5 4

1 2010

3 2010 5 19

1

2

3

4

5

6

7

4 2010 6 29

1

2

3

4

5 < >

6 2010

2010

"

"

CDM

AMTC

" "

2009 30

" "

2009

2009 65

" "

2010

2010

2003 56

2005 120

" "

2010

2010 6 30

2010-001		
2010-002		
2010-003		
2010-004		
2010-005	2010	
2010-006		
2010-007		
2010-008		
2010-009		
2010-010		
2010-011	2010	
2010-012	2010	

	1, 918, 779, 638.25	1, 890, 241, 303.86	533, 391, 855.99	375, 730, 109.32
			-	
	1, 510, 000.00	1, 510, 000.00		
	244, 061, 736.93	244, 061, 736.93	224, 601, 994.94	224, 601, 994.94
	101, 646, 975.63	101, 646, 975.63	10, 826, 901.64	10, 826, 901.64
	10, 723, 315.20	56, 428, 091.50	5, 330, 527.90	177, 886, 357.00
	353, 429, 803.78	353, 429, 803.78	364, 173, 930.15	364, 173, 930.15
			3, 450, 000.00	3, 450, 000.00
	2, 630, 151, 469.79	2, 647, 317, 911.70	1, 141, 775, 210.62	1, 156, 669, 293.05
		30, 070, 190.00		30, 070, 190.00
	112, 248, 232.16	112, 238, 833.98	112, 505, 839.06	112, 505, 839.06
	70, 000.00			

	49,573,203.21	169,112.18	50,072,505.79	153,788.82
	1,151,598.73	1,151,598.73	1,536,600.97	1,536,600.97
	1,128,540.18	1,128,540.18	4,983,993.73	4,983,993.73
	164,171,574.28	144,758,275.07	169,098,939.55	149,250,412.58
	2,794,323,044.07	2,792,076,186.77	1,310,874,150.17	1,305,919,705.63
			141,451,109.48	141,451,109.48
	2,056,053.00	2,056,053.00	4,875,710.17	4,875,710.17
	298,571,509.02	286,352,226.04	465,922,978.00	450,531,927.21
	19,628,118.19	19,628,118.19	16,061,336.05	16,061,336.05
	7,237,730.86	7,237,730.86	13,842,249.55	13,842,249.55
	-23,230,106.63	-23,230,506.63	-32,507,764.75	-32,507,764.75
	23,204,210.53	30,852,623.72	13,816,395.21	22,524,813.07
	327,467,514.97	322,896,245.18	623,462,013.71	616,779,380.78

	2,908,774.96	2,908,774.96	2,790,178.30	2,790,178.30
	2,908,774.96	2,908,774.96	2,790,178.30	2,790,178.30
	330,376,289.93	325,805,020.14	626,252,192.01	619,569,559.08
	472,542,500.00	472,542,500.00	416,542,500.00	416,542,500.00
	1,587,843,536.84	1,587,690,965.84	14,841,263.93	14,688,692.93
	46,339,020.36	46,339,020.36	46,339,020.36	46,339,020.36
	357,221,696.94	359,698,680.43	206,899,173.87	208,779,933.26
	2,463,946,754.14	2,466,271,166.63	684,621,958.16	686,350,146.55
	2,463,946,754.14	2,466,271,166.63	684,621,958.16	686,350,146.55
	2,794,323,044.07	2,792,076,186.77	1,310,874,150.17	1,305,919,705.63

	1,245,841,405.99	1,245,841,405.99	1,142,624,173.4	1,142,624,173.40
	1,245,841,405.99	1,245,841,405.99	1,142,624,173.4	1,142,624,173.40
	1,069,495,229.15	1,068,899,005.05	1,047,877,805.38	1,039,229,169.47
	1,038,909,518.77	1,038,909,518.77	1,004,357,028.90	1,004,743,475.38
				-
				-

				-
	192, 575. 75	192, 575. 75	1, 893, 554. 62	1, 893, 554. 62
	18, 448, 434. 88	18, 448, 434. 88	16, 428, 054. 69	16, 428, 054. 69
	13, 412, 560. 72	12, 811, 274. 53	12, 611, 940. 08	12, 076, 614. 54
	756, 073. 27	761, 135. 36	3, 081, 676. 96	3, 003, 378. 49
	-2, 223, 934. 24	-2, 223, 934. 24	9, 505, 550. 13	1, 084, 091. 75
" - "				
" - "				
" - "				
" - "	176, 346, 176. 84	176, 942, 400. 94	94, 746, 368. 02	103, 395, 003. 93
	4, 824, 103. 14	4, 824, 103. 14	2, 260, 265. 22	2, 260, 265. 22
	122, 648. 26	122, 648. 26	7, 721. 91	7, 721. 91
" - "	181, 047, 631. 72	181, 643, 855. 82	96, 998, 911. 33	105, 647, 547. 24
	30, 725, 108. 65	30, 725, 108. 65	8, 784, 945. 72	10, 563, 339. 21
" - "	150, 322, 523. 07	150, 918, 747. 17	88, 213, 965. 61	95, 084, 208. 03
	150, 322, 523. 07	150, 918, 747. 17	88, 213, 965. 61	95, 084, 208. 03

			459,010.82	611,581.82
	185,166,499.63	185,134,496.01	28,008,875.25	28,008,861.61
	185,202,919.66	185,170,916.04	31,459,811.22	28,620,443.43
	5,591,254.05	5,511,754.05	10,779,271.63	10,779,271.63
			202,107,756.06	193,686,297.68
	5,591,254.05	5,511,754.05	212,887,027.69	204,465,569.31
	179,611,665.61	179,659,161.99	-181,427,216.47	-175,845,125.88
	1,680,000,000.00	1,680,000,000.00		
	29,272,664.32	29,272,664.32	170,614,720.11	170,614,720.11
	1,709,272,664.32	1,709,272,664.32	170,614,720.11	170,614,720.11
	170,723,773.80	170,723,773.80	90,992,909.27	90,992,909.27
	1,336,673.86	1,336,673.86	2,454,971.51	2,454,971.51
	45,389,790.69	45,389,790.69	4,764,766.47	4,764,766.47
	217,450,238.35	217,450,238.35	98,212,647.25	98,212,647.25
	1,491,822,425.97	1,491,822,425.97	72,402,072.86	72,402,072.86
	-2,441,127.79	-2,416,397.56	-744,899.40	-741,657.65
	1,565,403,828.68	1,544,527,240.96	78,287,941.19	79,981,545.27
	347,940,373.21	340,278,626.54	347,320,451.68	336,545,242.39
	1,913,344,201.89	1,884,805,867.50	425,608,392.87	416,526,787.66

2010

1									
2									
3									
4									
1									
2									
	472,542,500.00	1,587,843,536.84			46,339,020.36		357,555,287.08		2,464,280,344.28

()

	166,617,000.00	98,149,763.93			20,625,393.79		191,298,216.93	-1,709.51	476,688,665.14
	166,617,000.00	98,149,763.93			20,625,393.79		191,298,216.93	-1,709.51	476,688,665.14
" "		-152,571.00					88,213,965.61	1,709.51	88,063,104.12
							88,213,965.61		88,213,965.61
		-152,571.00						1,709.51	-150,861.49
		-152,571.00					88,213,965.61	1,709.51	88,063,104.12
1									
2									

3										
1										
2										
3										
4										
1										
2										
3										
4										
1										
2										
	166,617,000.00	97,997,192.93			20,625,393.79		279,512,182.54			564,751,769.26

2010

	416,542,500.00	14,688,692.93			46,339,020.36		208,779,933.26	686,350,146.55
	416,542,500.00	14,688,692.93			46,339,020.36		208,779,933.26	686,350,146.55
"_"	56,000,000.00	1,573,002,272.91					150,918,747.17	1,779,921,020.08
							150,918,747.17	150,918,747.17
							150,918,747.17	150,918,747.17
	56,000,000.00	1,573,002,272.91						1,629,002,272.91
1	56,000,000.00	1,573,002,272.91						1,629,002,272.91
2								
3								
1								
2								
3								
4								
1								
2								

3								
4								
1								
2								
	472,542,500.00	1,587,690,965.84			46,339,020.36		359,698,680.43	2,466,271,166.63

()

	166,617,000.00	97,997,192.93			20,625,393.79		185,628,544.15	470,868,130.87
	166,617,000.00	97,997,192.93			20,625,393.79		185,628,544.15	470,868,130.87
"_"							95,084,208.03	95,084,208.03
							95,084,208.03	95,084,208.03
							95,084,208.03	95,084,208.03
1								
2								
3								
1								
2								

3								
4								
1								
2								
3								
4								
1								
2								
	166,617,000.00	97,997,192.93			20,625,393.79		280,712,752.18	565,952,338.90

2010 1 6

1

A ,

3069

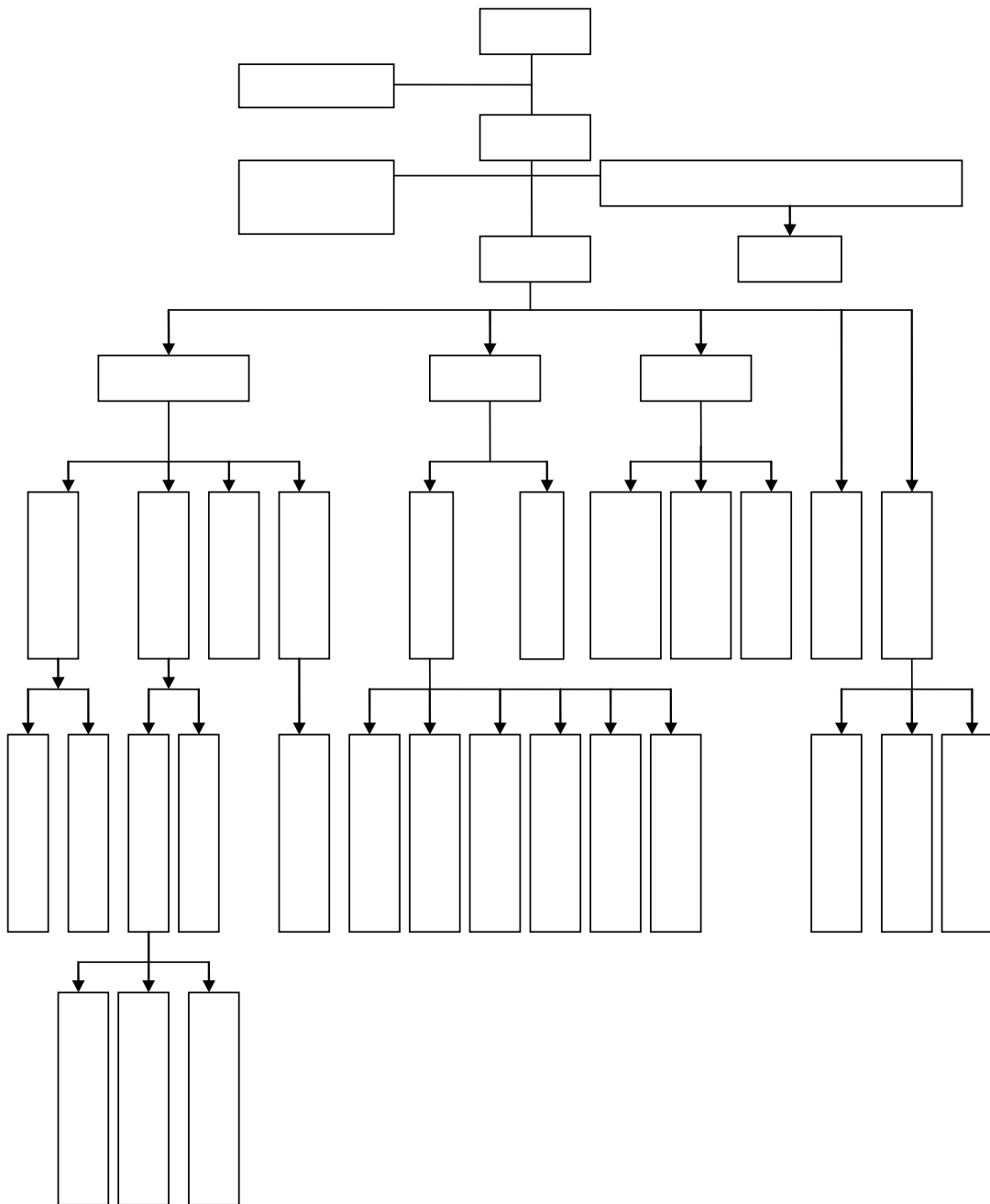
A 31/32

2

("

")

5



6

2010 08 26

1

2

2010 6 30

2010 1 6

3

1 1 12 31

4

5

A

B

6

A

B

C

D

E

20%

F

7

8

A

a

b

c

B

"

"

"

"

"

"

9

A

B

a

b

1/

2/

C

a

b

D

E

a

b

c

d

e

f

g

h

F

a

b

c

10

d

10

1

FOB	1
	2

1 FOB

FOB

2

1	1	5%
1	2	10%
2	3	30%
3	4	50%
4	5	80%
5		100%

11

1

2

3

4

5

12

1

A

a

b

1/

2/

3/

4/

B

a

b

c

d

MM

4

13

1

2

	30	10%	3%
	10	10%	9%
	10	10%	9%
	5	10%	18%
	5	10%	18%
	5	10%	18%

3

4

14

A

B

1

3

2

15

A

a

b

c

B

16

A

B

C

D

1

2

3

4

17

A

B

5

c

B

C

20

21 /

A

a

1/

2/

b

1/

2/

c

B

a

b

1/

2/

c

1/

2/

22

1

2

23

1

		17.00% 1
		5.00%
		15.00% 2
		1.00%
		3.00%

1 17.00%

2 2010 15% 2009 10%

2

2008 12 16

GR200844200325

2010 1 1

15%

1

1

ZHACCHI HONGKONG LTD				1		1	---	100%	100%		---	---	---
				3000		3000	172, 555, 829. 10	100%	100%		---	---	---

2

3

2

3

4

5

6

7

8

9

10

"

"

" " " "

1

	2010-6-30			2009-12-31		
	461,111.00	1.0000	461,111.00	426,272.59	1.0000	426,272.59
	23,701.50	0.8724	20,677.19	---	-	---
	28,631.58	6.7909	194,434.20	5,275.26	6.8282	36,020.53
	410.15	8.2710	3,392.35	5,104.75	9.7971	50,011.75
	58.10	4.8351	280.92	58.10	4.8606	282.40
	100.00	10.2135	1,021.35	100.00	10.9780	1,097.80
	---	---	680,917.01	---	---	513,685.07
	1,829,582,200.51	1.0000	1,829,582,200.51	397,627,035.16	1.0000	397,627,035.16
	49,490.00	0.8724	43175.06	487,063.17	0.8805	428,859.12
	5,801,141.89	6.7909	39,394,974.74	14,552,999.89	6.8282	99,370,793.86
	440,446.69	8.2710	3,642,934.57	---	---	---
	---	---	1,872,663,284.88	---	---	497,426,688.14
				--	--	
	40,000,000.00	1.0000	40,000,000.00	29,986,191.50	1.0000	29,986,191.50
	800,400.00	6.7909	5,435,436.36	800,400.00	6.8282	5,465,291.28
	---	---	45,435,436.36	---	---	35,451,482.78
	---	---	1,918,779,638.25	---	---	533,391,855.99

1 2010 6 30

1,629,175,179.74

2

45,435,436.36

5,435,436.36

6

40,000,000.00

3

2

1

	2010-6-30	2009-12-31
	1,510,000.00	---
	1,510,000.00	---

2 2010 6 30

3

A 2010 6 30

B 8,321,585.00

	2010-5-25	2010-8-24	2,248,000.00	01450230
	2010-5-14	2010-8-13	1,495,000.00	06622218
	2010-5-25	2010-8-25	1,485,000.00	04327433
	2010-5-6	2010-8-5	1,000,000.00	03334348
	2010-3-16	2010-7-16	200,000.00	05317437
			6,428,000.00	

4 2010 6 30

3

1

	2010-6-30				2009-12-31			
	235,807,593.28	96.32%	723,178.43	94.30%	221,843,929.32	97.47%	2,987,204.19	99.88%
	---	---	---	---	---	---	---	---

100

12

	2010-6-30		2009-12-31	
	194,560.66	---	1,048,235.65	---
	339,545.00	---	558,071.52	---
	147,839.71	---	200,431.99	---
	2,254,811.00	---	2,254,811.00	---
	6,073,671.04	---	1,111,710.91	---
	1,712,887.79	---	362,032.26	204,765.43
	10,723,315.20	---	5,535,293.33	204,765.43

2 2010 6 30

100	6,277,362.39	---	---	
	6,277,362.39	---		--

204,765.43

5

5% (5%)

6

2010 6 30

8,328,482.04

194,560.66

79.48%

7

		5,237,362.39		9.28%
		1,040,000.00		1.84%
		634,725.00		1.12%
		580,086.00		1.03%
		242,700.00		0.43%
		7,734,873.39		

8

9 2010 6 30

5

1

	2010-6-30		2009-12-31	
		(%)		(%)
1	101,646,975.63	100.00%	10,826,901.64	100.00%

	101,646,975.63	100.00%	10,826,901.64	100.00%
--	----------------	---------	---------------	---------

2

CHUNGWA PICTURE TUBES LTD.		41,281,446.48	2010	
CHI MEI OPTOELECTRONICS CORP.		33,958,778.27	2010	
		4,796,242.90	2010	
		4,176,403.50	2010	
()		3,422,613.60	2010	
		87,635,484.75		

3 5% 5%

4 2010 6 30

90,820,073.99 2010 1-6

6

1

	2010-6-30			2009-12-31		
	152,568,068.70	1,976,224.21	150,591,844.49	164,746,115.72	2,178,997.00	162,567,118.72
	62,969,987.40	1,327,520.28	61,642,467.12	44,827,610.87	1,327,520.28	43,500,090.59
	82,595,366.86	---	82,595,366.86	74,699,396.34	---	74,699,396.34
	59,107,431.99	544,185.36	58,563,246.63	83,264,878.82	544,185.36	82,720,693.46

	2010-6-30			2009-12-31		
	---	---	---	---	---	---
	36,878.68	---	36,878.68	686,631.04	---	686,631.04
	357,277,733.63	3,847,929.85	353,429,803.78	368,224,632.79	4,050,702.64	364,173,930.15

2

	2009-12-31				2010-6-30
	2,178,997.00	---	---	202,772.79	1,976,224.21
	1,327,520.28	---	---	---	1,327,520.28
	---	---	---	---	---
	544,185.36	---	---	---	544,185.36
	---	---	---	---	---
	---	---	---	---	---
	4,050,702.64	---	---	202,772.79	3,847,929.85

3

	1	---	---
	1	---	---
	1	---	---
	1	---	---
	1	---	---
	1	---	---

1 2010 6 30

7

	2010-6-30	2009-12-31
	---	3,450,000.00
	---	3,450,000.00
	2009	2010

8

1

		2009-12-31		2010-6-30								
		2,120,146.00	2,120,146.00	-2,120,146.00	---	(%)	100%	100%	---	---	----	---
		---	---	---	---	---	---	---	---	---	---	---

2 2010 6 30

3 2009

2009

4 2010 6 30

9

1

	2009-12-31				2010-6-30
	128,644,206.39	5,015,234.57	43,788.03	---	133,615,652.93
	37,940,673.06	---	---	---	37,940,673.06
	80,966,962.74	2,341,432.26	9,600.00	---	83,298,795.00
	1,368,506.81	451,554.00	---	---	1,820,060.81
	4,491,895.92	1,066,185.28	34,188.03	---	5,523,893.17
	3,876,167.86	1,156,063.03	---	---	5,032,230.89
	16,138,367.33	5,231,798.24	2,744.80	---	21,367,420.77
	2,750,698.72	565,937.88	---	---	3,316,636.60
	9,090,544.01	3,686,802.54	2,232.00	---	12,775,114.55
	800,761.43	139,004.22	---	---	939,765.65
	1,708,917.66	445,805.53	512.8	---	2,154,210.39
	1,787,445.51	394,248.07	---	---	2,181,693.58
	112,505,839.06	---	---	---	112,248,232.16
	35,189,974.34	---	---	---	34,624,036.46
	71,876,418.73	---	---	---	70,523,680.45
	567,745.38	---	---	---	880,295.16
	2,782,978.26	---	---	---	3,369,682.78
	2,088,722.35	---	---	---	2,850,537.31
	---	---	---	---	---
	---	---	---	---	---
	---	---	---	---	---
	---	---	---	---	---
	---	---	---	---	---
	---	---	---	---	---
	112,505,839.06	---	---	---	112,248,232.16

	2009-12-31				2010-6-30
	35,189,974.34	---	---	---	34,624,036.46
	71,876,418.73	---	---	---	70,523,680.45
	567,745.38	---	---	---	880,295.16
	2,782,978.26	---	---	---	3,369,682.78
	2,088,722.35	---	---	---	2,850,537.31

2010 1-6 5,231,798.24

2010 1-6 0.00

2 2010 6 30

3 2010 6 30

4 2010 6 30

5 2010 6 30

6 2010 6 30

10

1

	2009-12-31				2010-6-30
	51,642,411.79	25,152.62	---	---	51,667,564.41
	179,816.99	25,152.62	---	---	204,969.61
	51,462,594.80		---	---	51,462,594.80
	1,569,906.00	524,455.20	---	---	2,094,361.20
	26,028.17	9,829.26	---	---	35,857.43
	1,543,877.83	514,625.94	---	---	2,058,503.77
	50,072,505.79	---	---	---	49,573,203.21
	153,788.82	---	---	---	169,112.18
	49,918,716.97	---	---	---	49,404,091.03

	2009-12-31				2010-6-30
	---	---	---	---	---
	---	---	---	---	---
	---	---	---	---	---
	50,072,505.79	---	---	---	49,573,203.21
	153,788.82	---	---	---	169,112.18
	49,918,716.97	---	---	---	49,404,091.03

2010 1-6 524,455.20

2

11

	2009-12-31				2010-6-30	
	1,536,600.97	---	385,002.24	---	1,151,598.73	---
	1,536,600.97	---	385,002.24	---	1,151,598.73	---

12 /

1

	2010-6-30	2009-12-31
	692,223.94	1,086,936.72
	436,316.24	418,526.75
	---	3,478,530.26
	1,128,540.18	4,983,993.73

	2010-6-30	2009-12-31
	--	--
	--	--
	--	--

2

	2010-6-30	2009-12-31
	574,837.59	428,203.25
	574,837.59	428,203.25

3 2010 6 30

4

	766,896.43	3,195,542.12
	3,847,929.85	4,050,702.64
	---	11,150,097.20
	2,908,774.96	2,790,178.30
	---	6,377,383.55
	----	5,662,720.99
	7,523,601.24	33,226,624.80

13

	2009-12-31	---			---	2010-6-30
	3,195,542.12	---	2,223,880.26	204,765.43	---	766,896.43
	4,050,702.64	---	---	202,772.79	---	3,847,929.85
	2,120,146.00	---	---	2,120,146.00	---	---
	9,366,390.76	---	2,223,880.26	2,527,684.22	---	4,614,826.28

14

1

	2010-6-30	2009-12-31
	---	---
	---	141,451,109.48
	---	---
	---	141,451,109.48

2 2010 6 30

3 2010 6 30

15

	2010-6-30	2009-12-31
	1,101,801.64	4,875,710.17
	954,251.36	---
	2,056,053.00	4,875,710.17

2,056,053.00

2010 6 30

16

1

	2010-6-30	2009-12-31
	295,689,039.85	462,937,458.38
	2,671,145.50	2,981,499.20
	211,323.67	4,020.42
	298,571,509.02	465,922,978.00

2 2010 6 30

5% 5%

3 2010 6 30

2-3

17

1

	2010-6-30	2009-12-31
	19,265,612.25	15,024,631.34

19

	2010-6-30	2009-12-31
	-42,387,144.73	-50,274,823.26
	3,400.00	38,061.20
	118,738.08	4,423,994.68
	10,199.89	114,183.57
	18,156,114.59	11,840,675.66
	---	---
	53,676.95	---
	---	1,350,143.40
	814,908.59	---
	-23,230,106.63	-32,507,764.75

20

1

	2010-6-30	2009-12-31
	23,137,613.82	13,766,983.14
	66,596.71	49,412.07
	23,204,210.53	13,816,395.21

2 2010 6 30

5% 5%

3 2010 6 30

1

4 2010 6 30

5 2010 6 30

21

	2009-12-31			2010-6-30
	2,790,178.30	152,004.66	33,408.00	2,908,774.96
	2,790,178.30	152,004.66	33,408.00	2,908,774.96

2, 908, 774. 96

22

	2009-12-31	+			2010-6-30
	416,542,500.00	56,000,000.00	---	56,000,000.00	472,542,500.00

2010 5 17 " [2010] 648 "

5,600 1 1,680,000,000.00
 50,997,727.09 , 1,629,002,272.91
 56,000,000.00 1,573,002,272.91

24

	2009-12-31			2010-6-30
	46,339,020.36	---	---	46,339,020.36
	---	---	---	---
	46,339,020.36	---	---	46,339,020.36

25

	2010 6 30	2009 12 31	
	206,899,173.87	191,298,216.93	---
+ -	---	---	---
	206,899,173.87	191,298,216.93	---
	150,322,523.07	249,585,833.51	---
	---	--	---
	---	25,713,626.57	10.00%
	---	---	---
	---	---	---
	---	41,654,250.00	---
	---	166,617,000.00	---
	357,221,696.94	206,899,173.87	---

26

1

	2010 1-6	2009 1-6
	1,245,841,405.99	1,142,624,173.40
	---	---
	1,245,841,405.99	1,142,624,173.40
	1,038,909,518.77	1,004,357,028.90
	1,038,909,518.77	1,004,357,028.90

2

	2010 1-6	2009 1-6
	1,245,841,405.99	1,038,909,518.77
	1,245,841,405.99	1,038,909,518.77

3

	2010 1-6	2009 1-6
	677,894,467.75	588,341,268.01
	495,095,407.62	390,814,483.16
	60,472,330.90	49,855,679.66
	5,298,124.75	3,889,205.39
	7,081,074.97	6,008,882.56

	1,245,841,405.99	1,038,909,518.77	1,142,624,173.40	1,004,357,028.90
--	------------------	------------------	------------------	------------------

4

	2010 1-6		2009 1-6	
	643,781,093.82	519,044,205.28	520,783,427.24	450,097,672.71
	187,854,553.81	159,643,182.39	403,703,606.47	362,529,077.22
	235,027,066.04	205,301,484.85	190,899,938.27	167,929,680.96
	177,756,976.47	153,457,065.68	26,694,645.55	22,966,915.08
	1,421,715.85	1,463,580.57	542,555.87	833,682.93
	1,245,841,405.99	1,038,909,518.77	1,142,624,173.40	1,004,357,028.90

5

2010 1-6

ESI INTERNATIONAL, INC.	159,598,680.89	12.81%
Woolworth (H.K.) Sales Limited	157,342,656.87	12.63%
MYSTERY ELECTRONICS	53,757,158.09	4.31%
Carrefour Import SAS	52,906,241.10	4.25%
Tel sey S.P.A	48,056,850.36	3.86%
	471,661,587.31	37.86%

2009 1-6

TCL	256,874,332.47	22.48%
ESI INTERNATIONAL, INC.	92,328,738.23	8.08%

Engel System S. L. .	67,589,418.19	5.92%
	41,084,919.46	3.60%
TT International Ltd.	40,596,748.37	3.55%
	498,474,156.72	43.63%

2010

1.03

9.03%

27

	2010 1-6	2009 1-6	
	---	937.02	5%
	48,143.95	494,744.70	1%
	144,431.8	1,397,872.90	3%
	192,575.75	1,893,554.62	--

28

	2010 1-6	2009 1-6
	18,448,434.88	16,428,054.69
	1,494,233.82	2,720,559.67
	3,095,681.42	2,058,410.46
	---	---
	411,237.64	1,468,572.66
	1,941,006.50	2,222,585.61
	4,138,434.01	3,418,207.26
	621,317.63	749,894.61
	1,839,996.00	1,225,224.00

29

	2010 1-6	2009 1-6
	13,412,560.72	12,611,940.08
	5,588,442.14	6,050,310.34
	323,679.43	63,594.91
	624,833.28	962,777.30
	363,713.89	458,542.13
	816,009.96	827,460.18
	2,304,019.52	1,560,202.74
	621,542.98	404,375.66
	---	---
	152,653.82	180,211.95

30

2010 1-6

31

	2010 1-6	2009 1-6
	-2,223,934.24	9,505,550.13
	---	---
	-2,223,934.24	9,505,550.13

8,421,458.38

32

1

	2010 1-6	2009 1-6
	---	---
	---	---
	351,363.00	---
	1,150,199.15	170,796.61
	3,322,540.99	2,089,468.61
	4,824,103.14	2,260,265.22

2

	2010 1-6	2009 1-6	
	288,963.00	---	1
	62,400.00	---	2
	351,363.00	---	---

1

" 2009

"

2010 2 26

288,963.00

2

2008 113 "

" 2010 5 21

62,400.00

33

	2010 1-6	2009 1-6
	7,368.00	---
	7,368.00	---
	---	---
	115,280.26	7,721.91
	122,648.26	7,721.91

34

	2010 1-6	2009 1-6
	26,869,655.10	8,784,945.72
	3,855,453.55	---
	30,725,108.65	8,784,945.72

35

1

$$=P/(S_0 - S_1 - S_i \times M_i \div M_0 - S_j \times M_j \div M_0 - S_k)$$

$$=P/(S_0 - S_1 - S_i \times M_i \div M_0 - S_j \times M_j \div M_0 - S_k +$$

)

2

2010 1 6

=150,322,523.07 / (416,542,500+56,000,000*0)=0.36

/

2010 1 6

=146,326,286.42

/ (416,542,500+56,000,000*0)=0.35 /

36

	2010 1-6	2009 1-6
1.	---	---
	---	---
	---	---
	---	---
2.	---	---
	---	---
	---	---
	---	---
3.	---	---
	---	---
	---	---
	---	---
4.	---	1,709.51
	---	---
	---	1,709.51
5.	---	---
	---	---
	---	---
	---	---
	---	1,709.51

37

1

	2009 1-6	2009 1-6
	35,676,772.68	23,226,768.26

3

	2010 1-6	2009 1-6
6	180,016,046.42	26,290,472.84
	5,150,453.21	1,718,402.41
	185,166,499.63	28,008,875.25

4

	2010 1-6	2009 1-6
6	---	193,686,297.68
	---	8,421,458.38
	---	202,107,756.06

5

	2010 1-6	2009 1-6
	---	---
	---	---
	---	---

6

	2010 1-6	2009 1-6
	---	---

	1,941,855.60	1,314,766.47
	43,447,935.09	3,450,000.00
	45,389,790.69	4,764,766.47

38

1

	2010 1-6	2009 1-6
1		
	150,322,523.07	88,213,965.61
	-2,223,934.24	9,505,550.13
	5,229,053.44	2,610,532.06
	524,455.20	474,562.54
	385,002.24	385,002.24
“ ”	---	---
“ ”	7,368.00	---
“ ”	---	---
“ ”	569,204.04	2,797,944.49
“ ”	---	---
“ ”	3,855,453.55	-1,778,393.49
“ ”	---	---
“ ”	10,744,126.37	-25,403,571.28
“ ”	-108,768,186.65	-194,306,794.60
“ ”	-164,234,200.13	305,559,186.50
	---	---
	-103,589,135.11	188,057,984.20

	2010 1-6	2009 1-6
2		
	---	---
	---	---
	---	---
3		
	1,913,344,201.89	425,608,392.87
	347,940,373.21	347,320,451.68
	---	---
	---	---
	1,565,403,828.68	78,287,941.19

2

	2010 1-6	2009 1-6
1	---	---
2	---	---
	---	---
3	---	---
4	---	---
	---	---
	---	---
	---	---
	---	---
	---	---
1	---	---
2	---	---

	2010	1-6	2009	1-6
		---		---
3		---		---
4		---		---
		---		---
		---		---
		---		---
		---		---

3

	2010	1-6	2009	1-6
		1,913,344,201.89		425,608,392.87
		680,917.01		554,431.58
		243,488,105.14		425,053,961.29
		---		---
		---		---
		---		---
		---		---
		---		---
		---		---
		---		---
		1,913,344,201.89		425,608,392.87

1

2

1

--	--	--	--	--	--	--	--	--	--

5

1

2

(3)

		12000	2009.6.17	2012.10.22	
		600	2009.3.4	2010.3.4	
		11200	2009.3.10	2010.3.9	
		1000	2009.6.5	2010.6.5	
		250	2009.5.30	2010.4.15	
		10000	2009.9.2	2010.9.2	
		1000	2009.12.10	2010.12.9	
		12000	2009.10.23	2010.10.22	
		6000	2009.12.8	2010.12.8	

4

5

6

6

		2010-6-30	2009-12-31
		---	2,850,829.90

1 2010 6 30

2 2010 6 30

1

2

1

2

3

1

1

	2010-6-30				2009-12-31			
	235,807,593.28	96.32%	723,178.43	94.30%	221,843,929.32	97.47%	2,987,204.19	99.88%
	---	---	---	---	---	---	---	---
	9,021,040.08	3.68%	43,718.00	5.70%	5,748,842.31	2.53%	3,572.50	0.12%
	244,828,633.36	100.00%	766,896.43	100.00%	227,592,771.63	100.00%	2,990,776.69	100.00%

100

100

12

2

100	235,807,593.28	723,178.43	5.00%	1
	235,807,593.28	723,178.43		

1

3 2010 6 30

5%(5%)

4

Woolworth (H.K.) Sales Limited		52,388,521.95	1	21.40%
Axdi a International GmbH		37,873,279.05	1	15.47%
Carrefour Import SAS		26,404,662.07	1	10.78%
Tel sey S. P. A		25,308,534.64	1	10.34%
ESI INTERNATIONAL, INC.		15,747,234.69	1	6.43%
		157,722,232.40		64.42%

6 2010 6 30

7

8 2010 6 30

2

1

	2010-6-30				2009-12-31			
	52,249,181.69	92.59%	---	---	173,595,829.10	97.48%	---	---
	---	---	---	---	204,765.43	0.11%	204,765.43	100.00%
	4,178,909.81	7.41%	---	---	4,290,527.90	2.41%	---	---
	56,428,091.50	100.00%	---	---	178,091,122.43	100.00%	204,765.43	100.00%

100

100

12

	2010-6-30		2009-12-31	
	45,972,219.30		172,555,829.10	---
	194,560.66	---	1,048,235.65	---
	339,545.00	---	558,071.52	---
	147,839.71	---	200,431.99	---
	2,254,811.00	---	2,254,811.00	---
	6,073,671.04	---	1,111,710.91	---
	1,445,444.79	---	362,032.26	204,765.43
	56,428,091.50	---	178,091,122.43	204,765.43

2 2010 6 30

100	52,249,181.69	---	---	
	52,249,181.69	---		--

3 204,765.43 2009

204,765.43

4 2010 6 30 5%(5%)

5

		45,971,819.30	81.47%
		45,971,819.30	81.47%

8

9 2010 6 30

3

			2009-12-31		2010-6-30	(%)	(%)				
		2,120,146.00	2,120,146.00	-2,120,146.00	---	100%	100%	---	---	---	---
ZHAOCHI HONGKONG LTD		70,190.00	70,190.00	---	70,190.00	100%	100%	---	---	---	---
		30,000,000.00	30,000,000.00	---	30,000,000.00	100%	100%	---	---	---	---
	--	32,190,336.00	32,190,336.00	---	32,190,336.00	100%	100%	--	2,120,146.00	2,120,146.00	
	2009			2009							

4

1

	2010 1-6	2009 1-6
--	----------	----------

	1,245,841,405.99	1,142,624,173.40
	1,245,841,405.99	1,142,624,173.40
	1,038,909,518.77	1,004,743,475.38
	1,038,909,518.77	1,004,743,475.38

2

	2010	1-6	2009	1-6
	1,245,841,405.99	1,038,909,518.77	1,142,624,173.40	1,004,743,475.38
	1,245,841,405.99	1,038,909,518.77	1,142,624,173.40	1,004,743,475.38

3

	2010	1-6	2009	1-6
	677,894,467.75	588,341,268.01	574,676,952.45	522,351,591.35
	495,095,407.62	390,814,483.16	474,174,041.86	400,777,932.48
	60,472,330.90	49,855,679.66	77,097,296.20	68,368,670.85
	5,298,124.75	3,889,205.39	14,733,728.93	13,202,456.88
	7,081,074.97	6,008,882.56	1,942,153.96	42,823.82
	1,245,841,405.99	1,038,909,518.77	1,142,624,173.40	1,004,743,475.38

4

	2010	1-6	2009	1-6
	643,781,093.82	519,044,205.28	520,783,427.24	450,273,806.67
	187,854,553.81	159,643,182.39	403,703,606.47	362,665,613.66

	235,027,066.04	205,301,484.85	190,899,938.27	167,994,245.15
	177,756,976.47	153,457,065.68	26,694,645.55	22,975,943.47
	1,421,715.85	1,463,580.57	542,555.87	833,866.43
	1,245,841,405.99	1,038,909,518.77	1,142,624,173.40	1,004,743,475.38

2010 1-6

ESI INTERNATIONAL, INC.	159,598,680.89	12.81%
Woolworth (H.K.) Sales Limited	157,342,656.87	12.63%
MYSTERY ELECTRONICS	53,757,158.09	4.31%
Carrefour Import SAS	52,906,241.10	4.25%
Tel sey S.P.A	48,056,850.36	3.86%
	471,661,587.31	37.86%

2009 1-6

TCL	256,874,332.47	22.48%
ESI INTERNATIONAL, INC.	92,328,738.23	8.08%
Engel System S.L.	67,589,418.19	5.92%
	41,084,919.46	3.60%
TT International Ltd.	40,596,748.37	3.55%
	498,474,156.72	43.63%

9.03%

	2010 1-6	2009 1-6
1		
	150,918,747.17	95,084,208.03
	-2,223,934.24	1,084,091.75
	5,228,951.62	3,077,398.40
	9,829.26	---
	385,002.24	385,002.24
“ ”	---	---
“ ”	7,368.00	---
“ ”	---	---
“ ”	576,477.43	2,793,006.86
“ ”	---	---
“ ”	3,855,453.55	---
“ ”	---	---
“ ”	10,744,126.37	-28,039,827.76
“ ”	-131,917,133.85	-192,047,307.79
“ ”	-162,122,836.99	301,829,684.21
	---	---
	-124,537,949.44	184,166,255.94
2		
	---	---
	---	---
	---	---
3		
	1,884,805,867.50	416,526,787.66
	340,278,626.54	336,545,242.39

	2010 1-6	2009 1-6

	2010 1-6	2009 1-6
	---	---
	---	---
	4, 357, 459. 88	2, 252, 543. 31
	---	---
	- 705, 218. 23	- 450, 508. 66
	---	---
	3, 996, 236. 65	12, 365, 373. 86
	2010 1-6	2009 1-6
	- 7, 368. 00	---
	---	10, 563, 339. 21
	351, 363. 00	---
	---	---
	---	---
	---	---
	---	---
	---	---
	---	---
	---	---
	---	---
	---	---

	2010 1-6	2009 1-6
	---	---
	---	---
	---	---
	4, 357, 459. 88	2, 252, 543. 31
	---	---
	- 705, 218. 23	- 450, 508. 66
	---	---
	3, 996, 236. 65	12, 365, 373. 86

2

3

1

	2010 1-6	2009 1-6	2010 1-6	2009 1-6	2010 1-6	2009 1-6	2010 1-6	2009 1-6
	19.78%	16.94%	0.36	0.21	0.36	0.21		
	19.26%	14.56%	0.35	0.18	0.35	0.18		

2

	2010 1-6	2009 1-6	2010 1-6	2009 1-6	2010 1-6	2009 1-6	2010 1-6	2009 1-6
	19.81%	18.34%	0.36	0.23	0.36	0.23		
	19.29%	15.96%	0.35	0.20	0.35	0.20		

4

1

	2010 5 17	"	[2010] 648
"			
	5,600	1	1,680,000,000.00
	50,997,727.09		1,629,002,272.91
2010 6 30			
1,629,175,179.74			
2			
	90,820,073.99		838.84%
3			
		5,237,362.39	
	5,392,787.30		101.17%
4			
	141,451,109.48		
5			
	167,351,468.98		35.92%
6			
		6,604,518.69	47.71%
	12		
	2010 6	2010 7	
7			
103,217,232.59			9.03%
8			
1,700,978.87			89.83%

